

PhotoRedOx Box, EvoluChem™

Contents

Product Overview	2
Recommendation	2
Storage	2
Components	3
Optional Components	3
How to Use	4

HepatoChem, Inc.

100 Cummings Center, Suite 451C,

Beverly, MA 01915

Phone: (617) 500-5285

Fax: (617) 274-0827

info@hepatochem.com

www.hepatochem.com

Legal information: Patent Pending

Product overview:

The EvoluChem™ PhotoRedOx Box is designed to facilitate photochemical experiments. This device is compatible with most vial formats (0.3 ml, 2 ml, 4 ml, 8 ml, and 20 ml vials). Its compact design allows for use of the box with any stirring plate. A built-in fan keeps the reaction conditions at room temperature. (Patent Pending) A photochemical array kit are available in 0.3 ml vial format with pre-mixed reagent and catalysts.

Benefits

- Easy setup on a standard stirring plate
- Perform up to 32 reaction conditions simultaneously
- Individually sealed vials enable flexible study design
- Saves your substrate using low scale reaction conditions
- Saves time on optimization

Material required, but not supplied

- Blue light source - Suggested 450nm LED (HCK1012-01-002)
- Vial holder HCK-1006-01-017
- Stirring plate

Recommendation

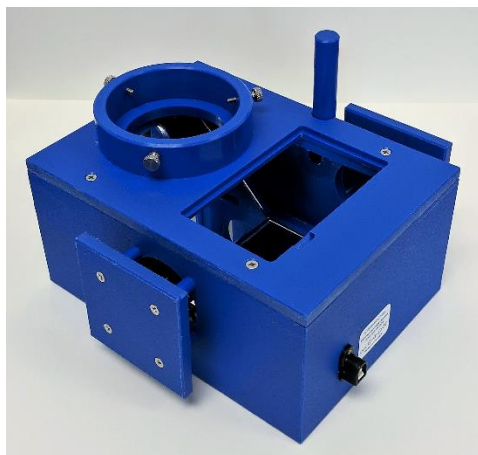
- Safety personal protection such as gloves, safety glasses and lab coat should be worn at all times.

Storage and Stability

- Room temperature

Components

This package contains a photochemistry device and a voltage converter 110V AC/ 12V DC (US/UK) or 220V AC/ 12V DC (EU)



Optional components

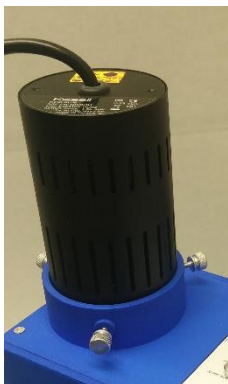
Catalog number	Description
HCK1006-01-017	32 X 0.3 ml vials photochemistry holder
HCK1006-01-018	8 X 2 ml vials photochemistry holder
HCK1006-01-019	8 X 4 ml vials photochemistry holder
HCK1006-01-020	8 X 8 ml vials photochemistry holder
HCK1006-01-021	2 X 20 ml vials photochemistry holder
HCK1006-01-022	Flow Reactor

How to Use

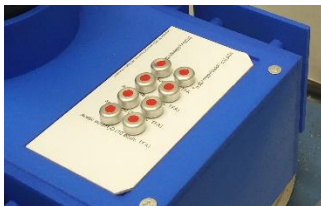
- Secure the device on a stirring plate using the handle



- Insert a light into the adaptor and tighten the knob screws. Do not over-tighten the light.



- Insert reaction vial holder in the device.



- Plug in the 12V voltage converter into the device. Make sure the fan is working.
- Plug in the light