



PRODUCT LIST OF AIJIREN

CHROMATOGRAPHY VIALS

Vials, Caps, Septa & Inserts

Autosampler Vials & Closures

GC Septa, COD Tubes, Crimper, Syringe

Filters

Copyright ©Aijiren Corp



Zhejiang Aijiren Technology, Inc. is a global supplier of Life-science, Chemistry, Laboratory consumables, Etc. Our major products are high performance liquid Chromatography & Gas Chromatography consumables such as Chromatography Autosampler Vials with Closures, Inserts, Crimper and Syringe Filters, Etc; Water Analysis consumables such as COD test tube.



VIALS WORKSHOP



GC-MS TEST LAB



AUTOMATIC LINE

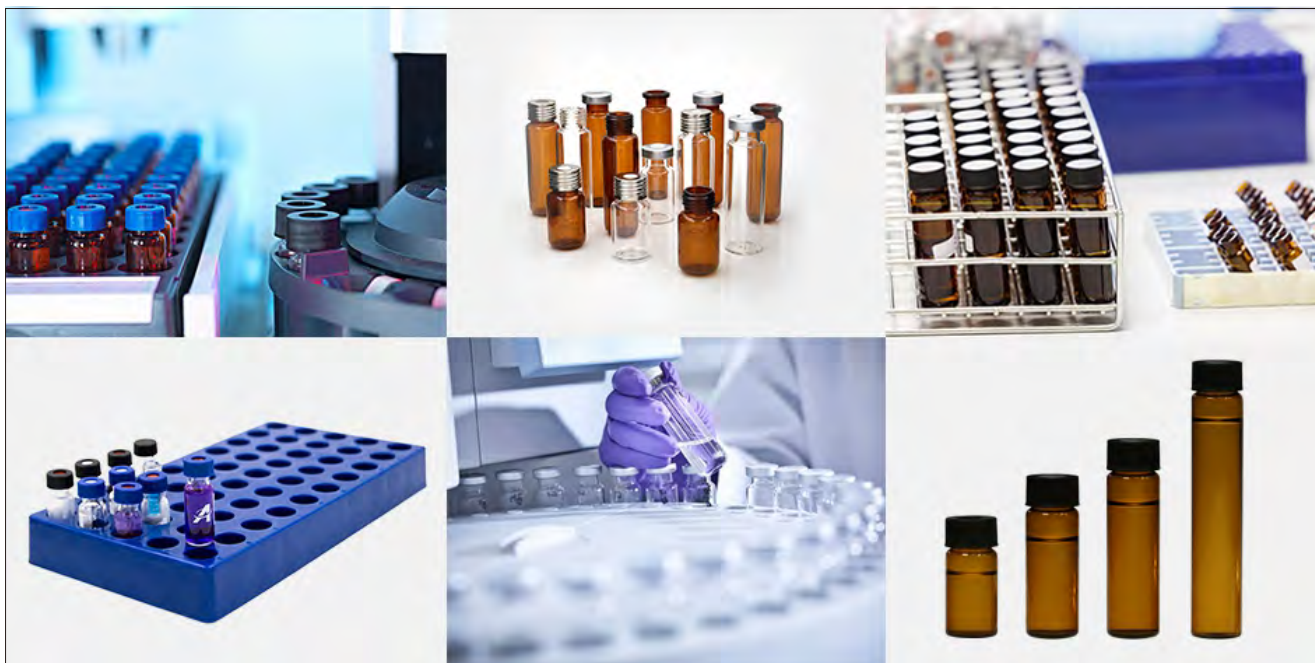
Index

About Us	1-4
Aijiren Vials Compatibility	5-7
0.3mL PP&Galss Micro-Vials, 1mL Shell Vials	8-10
1.5mL 8-425 Screw Neck Vials&Micro-Inserts ND8	11-13
1.5mL 9mm Short Thread Vials&Micro-Inserts ND9	14-16
1.5mL 10-425 Screw Neck Vials&Micro-Inserts ND10	17-18
1.5mL 11mm Snap Ring Vials&Micro-Inserts ND11	19-21
1.5mL 11mm Crimp Neck Vials&Micro-Inserts ND11	22-24
4mL 13-425 Screw Neck Vials ND13	25-26
18mm Screw Headspace Vials ND18	27-29
20mm Crimp Headspace Vials ND20	30-31
8mL 12mL 15-425 Storage Vials ND15	32-34
20-30-40-60mL 24-400 EPA Storage Vials ND24	35-36
40mL 24-400 TOC&Purge and Trap Vials ND24	37-38
2-60mL Closed Caps&Open Caps	39
Vials Rack&Hand Crimper	40
Test Tubes For Water Analysis	41
Sample Cell&Culture Tubes	42
GC Septa, Septa Customization	43
HPLC Syringe Filter	44
Aijiren Vials Comparison Chart	45-46
Products Package	47-48



BETTER VIALS

Aijiren has been involved in the design and manufacture of vials, caps and seals for chromatography as long as chromatography has been used as an automatic analytical technique. Therefore Aijiren is able to offer suitable combinations for the most popular instruments currently in use.



QUALITY

1. We passed the ISO9001:2015 quality certification.

It is worth mentioning as it's audited and issued by the most stringent SGS in the industry.

2. All materials are produced in a class 100,000 cleanroom.

3. Factory direct, we have our own R&D Center and Quality Control Center.

4. We also cooperate with domestic famous university for materials testing.

- Experienced technician with equipped R&D center to fulfill new research and product development.
- ONE & OEM services are available.
- Our products can be 100% compatible with original Agilent, Waters, Virian, Shimadzu, Etc.
- We are looking for suitable partners as our distributors in different market.
- Waiting for your contact with interest.



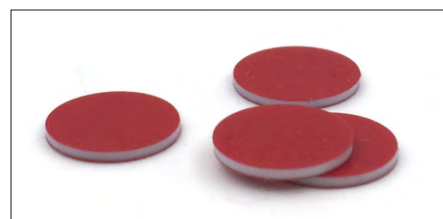
QUALITY MANAGEMENT SYSTEM

AIJIREN®



- **Protect sample integrity by choosing the right septa for your application**

Proper septa selection is critical to preventing contamination and avoiding damage to the needle and instrument.



- **Are the septa chemically compatible with your samples and solvents?**

Aijiren provides this septa compatibility as a guide and starting reference point.

We realized that chemical compatibility can vary depending on the concentration of the solvent, temperature, molecular weight of the solvent, and other factors. Therefore it is always recommended you to try a variety of septa to determine the best one for analysis.



SEPTA COMPATIBILITY

	PTFE	PTFE / Silicone rubber	PTFE /Silicone rubber/PTEE	PTEE / Red rubber	Fluorine rubber	PTFE / Butyl rubber
Acetonitrile	◆	◆	◆	◆		◆
Hexane, Heptane, Methane	◆		◆	◆	◆	
Methanol	◆	◆	◆	◆		◆
Benzene	◆		◆		◆	
Tetrahydrofuran	◆		◆			
Toluene	◆		◆			
Dimethylformamide DMF	◆	◆	◆			◆
Dimethyl Sulfone DMSO	◆	◆	◆			◆
Ether	◆	◆	◆			
Chloromethane Chloride	◆		◆		◆	
Ethanol	◆	◆	◆	◆	◆	◆
Acetic Acid	◆	◆	◆			◆
Acetone	◆	◆	◆			
Phenol	◆	◆	◆		◆	◆
cyclohexane	◆		◆	◆	◆	

*PTFE/silicone/ PTFE has the same chemical compatibility of PTFE ONLY UNTIL PUNCTURED. Please contact us if you need other Teflon composite products.

AIJIREN VIALS COMPATIBILITY

Manufacturer	Autosampler	8-425 Screw	9mm Screw	13-425 Screw	11mm Snap&Crimp	HeadSpace
Waters	717Plus				◆	
	Acquity	◆	◆		◆	
	Alliance 2690	◆	◆			
	CapLC	◆	◆		◆	
	WISP				◆	
Shimadzu	AOC14/1400	◆	◆		◆	
	AOC-20		◆	◆	◆	
	AOC88/9	◆	◆		◆	With magnetic
	AOC-5000	◆	◆		◆	
	HSS-2B/4B					◆
	LC 2010	◆	◆		◆	
	SIL-6A/6B/9A	With flange				
	SIL-10A,SIL-10Ai,SIL-10xL	◆	◆			
	SIL-HT/10ADVP	◆	◆		◆	
Thermo Fisher Scientific/ DIONEX	A-200S/AS 150/800/8000	◆	◆		◆	
	AS 3000/TRACE GC		◆		◆	
	ASI-100	◆	◆		◆	
	SURVEYOR LC	◆	◆		◆	
	TriPlus		◆		◆	
	WPS-3000RS	◆	◆		◆	
	WPS-3000SL	◆	◆		◆	
Techcomp / Varian	8034/8035/8100/8200	◆	◆		◆	
	9095/9100	◆	◆		◆	
	CP-84100		◆	◆	◆	
	Genesis					◆
Perkinelmer	Autosystem GC/XL/AS-2000	◆	◆	◆	◆	
	Claru 500/600		◆		◆	
	HS16/40					◆
	Integral 4000	◆	◆		◆	
	ISS-100/200	◆	◆		◆	
	LC 600, 42 vial tray		◆			
	LC Pllus	◆	◆	◆		
	Turbo Matrix 40/110					◆
CTC Analytics	Combipal		◆	◆	◆	With magnetic

AIJIREN VIALS COMPATIBILITY

Manufacturer	Autosampler	9mm Screw	13-425 Screw	11mm Snap&Crimp	HeadSpace	24-400 Screw
Agilent	Agilent 1050	◆		◆		
	Agilent 1090	◆		◆		
	Agilent 1100	◆		◆		
	Agilent 1200	◆		◆		
	Agilent 1260 G1329B	◆		◆		
	Agilent 1290	◆		◆		
	Agilent 79855(A)	◆		◆		
	CTC HTS+HTC PAL	◆		◆	With magnetic	
	Agilent 5880	◆		◆		
	Agilent 5890	◆		◆		
	Agilent 6850	◆		◆		
	Agilent 6890	◆		◆		
	Agilent 7673A	◆		◆		
	Agilent 7683A	◆		◆		
	Agilent 7693A	◆	◆			
	Agilent 7820A	◆		◆		
	Agilent 7890A	◆		◆		
	Agilent 7890B	◆		◆		
	CTC GC PAL	◆		◆	With magnetic	
	CTC Combi PAL				With magnetic	
	Agilent G1888A			◆		◆
	HS7694			◆		◆
	Agilent 7695A					◆
	Agilent 7697A					◆
	Tekmar SOLATek 72					◆
	Tekmar AQUATek 70					◆
	Archon Pluge + Trap					◆

What is glass 7.0/5.0 type?

Type	Material	Coefficient of Thermal Expansion	Features
7.0	Borosilicate Glass	$(6.2\sim 7.5) \times 10^{-6} K^{-1}$ (20~300°C)	Economy Type Competitive Price For Disposable Quick Test
5.0	Borosilicate Glass	$\leq 5 \times 10^{-6} K^{-1}$ (20~300°C)	Good Price For Test and Save Samples

Autosampler Vials

1.5mL Vials



1.5mL Vials
Usable Volume



1mL Shell Vials
0.3mL Micro-Vials, 11.6*32mm, Screw, Snap, Crimp



V181



9mm PP Screw Micro-Vial



Part No.	Description	Pk
V181	1mL Shell Vial, Clear, 8mm PE-Plug, Soft, Without Insertion, 8.2*40mm	100
VP91	0.3mL Clear PP Short Screw Micro-Vial, 9mm Thread, 11.6*32mm	100
VP93	0.3mL Amber PP Short Screw Micro-Vial, 9mm Thread, 11.6*32mm	100
VP101	0.3mL Clear PP Snap Ring/Crimp Micro-Vial, 11mm, 11.6*32mm	100
VP103	0.3mL Amber PP Snap Ring/Crimp Micro-Vial, 11mm, 11.6*32mm	100



VP103 Package



11mm PP Snap Ring/Crimp Micro-Vial

0.3mL Micro-Vials, Integrated w/Micro-Inserts, Base Bonded



VL913



VL923



VL935



VL945

Part No.	Description	Pk
VL913	0.3mL Clear 9mm Screw Vial Integrated w/Micro-Insert, Base Bonded, 11.6*32mm	100
VL923	0.3mL Clear 9mm Screw Vial w/Write-on Spot, Integrated w/Micro-Insert, Base Bonded, 11.6*32mm	100
VL935	0.3mL Amber 9mm Screw Vial Integrated w/Micro-Insert, Base Bonded, 11.6*32mm	100
VL945	0.3mL Amber 9mm Screw Vial w/Write-on Spot, Integrated w/Micro-Insert, Base Bonded, 11.6*32mm	100
VL1113	0.3mL Clear 11mm Crimp Vial Integrated w/Micro-Insert, Base Bonded, 11.6*32mm	100
VL1123	0.3mL Clear 11mm Crimp Vial w/Write-on Spot, Integrated w/Micro-Insert, Base Bonded, 11.6*32mm	100
VL1135	0.3mL Amber 11mm Crimp Vial Integrated w/Micro-Insert, Base Bonded, 11.6*32mm	100
VL1145	0.3mL Amber 11mm Crimp Vial w/Write-on Spot, Integrated w/Micro-Insert, Base Bonded, 11.6*32mm	100



VL1113



VL1123



VL1135



VL1145

8-425 Screw Neck Vials ND8, Small Opening



V813



V823



V835



V845

Part No.	Description	Pk
V817	1.5mL Clear Screw Neck Vial, 8-425 Thread, 11.6*32mm, 7.0 type	100
V827	1.5mL Clear Screw Neck Vial w/Write-on Spot, 8-425 Thread, 11.6*32mm, 7.0 type	100
V837	1.5mL Amber Screw Neck Vial, 8-425 Thread, 11.6*32mm, 7.0 type	100
V847	1.5mL Amber Screw Neck Vial w/Write-on Spot, 8-425 Thread, 11.6*32mm, 7.0 type	100
V813	1.5mL Clear Screw Neck Vial, 8-425 Thread, 11.6*32mm, 5.0 type	100
V823	1.5mL Clear Screw Neck Vial w/Write-on Spot, 8-425 Thread, 11.6*32mm, 5.0 type	100
V835	1.5mL Amber Screw Neck Vial, 8-425 Thread, 11.6*32mm, 5.0 type	100
V845	1.5mL Amber Screw Neck Vial w/Write-on Spot, 8-425 Thread, 11.6*32mm, 5.0 type	100



8-425 Vials&Closures
2in 1 KITS



8-425 Vials&Closures Package
Vials Package type: NP2

8-425 Thread Small Opening Caps with Septa



Part No.	Description		Pk
S81	White PTFE/Red Silicone Septa	Φ8*1.5mm	100
S82	Red PTFE/White Silicone Septa	Φ8*1.5mm	100
S83	Red PTFE/White Silicone/Red PTFE Septa	Φ8*1.5mm	100
S811	Pre-slit White PTFE/Red Silicone Septa	Φ8*1.5mm	100
S822	Pre-slit Red PTFE/White Silicone Septa	Φ8*1.5mm	100
S844	Pre-slit Blue PTFE/White Silicone Septa	Φ8*1.5mm	100
C81	8-425 Black Screw PP Cap, 5.5mm Centre Hole		100
C82	8-425 Black Screw PP Cap, Closed-top		100
C83	8-425 White Screw PP Cap, 5.5mm Centre Hole		100
SC8181	White PTFE/Red Silicone Septa, 8-425 Black Screw PP Cap, 5.5mm Centre Hole		100
SC8281	Red PTFE/White Silicone Septa, 8-425 Black Screw PP Cap, 5.5mm Centre Hole		100
SC8381	Red PTFE/White Silicone /Red PTFE Septa, 8-425 Black Screw PP Cap, 5.5mm Centre Hole		100
SC81181	Pre-slit White PTFE/Red Silicone Septa, 8-425 Black Screw PP Cap, 5.5mm Centre Hole		100
SC8182	White PTFE/Red Silicone Septa, 8-425 Black Screw PP Cap, Closed-top		100
SC8183	White PTFE/Red Silicone Septa, 8-425 White Screw PP Cap, 5.5mm Centre Hole		100

Micro-Inserts, Suits for 8-425 Vials



IP150



IV150



I250

Part No.	Description	Pk
IP150	150uL Micro-Insert with Mandrel Interior & Polymer Feet, 29*5mm, Suits for 8-425 Vials	100
IP150-I	150uL Micro-Insert with Mandrel Interior & Polymer Feet, 29*5mm, Suits for 8-425 Vials, Economy Package	100
IV150	150ul Insert , Conical Bottom, 31*5mm, Suits for 8-425 Vials	100
IV150-I	150ul Insert , Conical Bottom, 31*5mm, Suits for 8-425 Vials, Economy Package	100
I250	250uL Micro-Insert, 31*5mm, Clear, Flat Bottom, Suits for 8-425 Vials	100



IP150 Package



IP150-I Economy Package

9mm Short Thread Vials ND9



V913



V923



V935



V945

Part No.	Description	Pk
V917	1.5mL Clear 9mm Screw Vial, 11.6*32mm, 7.0 type	100
V927	1.5mL Clear 9mm Screw Vial w/Write-on Spot, 11.6*32mm, 7.0 type	100
V937	1.5mL Amber 9mm Screw Vial, 11.6*32mm, 7.0 type	100
V947	1.5mL Amber 9mm Screw Vial w/Write-on Spot, 11.6*32mm, 7.0 type	100
V913	1.5mL Clear 9mm Screw Vial, 11.6*32mm, 5.0 type	100
V923	1.5mL Clear 9mm Screw Vial w/Write-on Spot, 11.6*32mm, 5.0 type	100
V935	1.5mL Amber 9mm Screw Vial, 11.6*32mm, 5.0 type	100
V945	1.5mL Amber 9mm Screw Vial w/Write-on Spot, 11.6*32mm, 5.0 type	100
VR913	1.3mL Clear 9mm Screw Vial, High Recovery with 30 μ L Reservoir, 11.6*32mm, 5.0 type	100
VR935	1.3mL Amber 9mm Screw Vial, High Recovery with 30 μ L Reservoir, 11.6*32mm, 5.0 type	100
VP923	1.5mL Clear PP 9mm Screw Vial, 11.6*32mm	100
VP945	1.5mL Amber PP 9mm Screw Vial, 11.6*32mm	100



V927



VP923

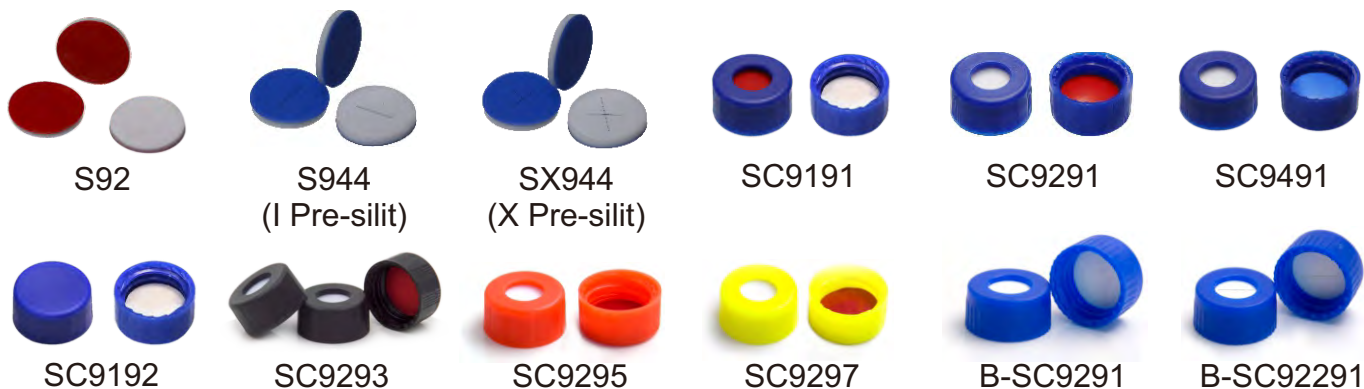


VR913



VR935

9mm PP Short Thread Caps with Septa



Part No.	Description		Pk
S91	White PTFE/Red Silicone Septa	Φ9*1mm	100
S92	Red PTFE/White Silicone Septa	Φ9*1mm	100
S93	Red PTFE/White Silicone/Red PTFE Septa	Φ9*1mm	100
S944	One line Pre-slit Blue PTFE/White Silicone Septa	Φ9*1mm	100
SX944	X Pre-slit Blue PTFE/White Silicone Septa	Φ9*1mm	100
C91	9mm Blue Short Screw PP Cap, 6mm Centre Hole		100
C92	9mm Blue Short Screw PP Cap, Closed-top		100
C93	9mm Black Short Screw PP cap, 6mm Centre Hole		100
C95	9mm Red Short Screw PP cap, 6mm Centre Hole		100
C97	9mm Yellow Short Screw PP cap, 6mm Centre Hole		100
SC9191	White PTFE/Red Silicone Septa, 9mm Blue Short Screw PP Cap, 6mm Centre Hole		100
SC91191	Pre-slit White PTFE/Red Silicone Septa, 9mm Blue Short Screw PP Cap, 6mm Centre Hole		100
SC9291	Red PTFE/White Silicone Septa, 9mm Blue Short Screw PP Cap, 6mm Centre Hole		100
SC92291	Pre-slit Red PTFE/White Silicone Septa, 9mm Blue Short Screw PP Cap, 6mm Centre Hole		100
SC9391	Red PTFE/White Silicone/Red PTFE Septa, 9mm Blue Short Screw PP Cap, 6mm Centre Hole		100

Different septa and caps can be assembled with each other

Part No.	Description	Pk
SC9192	White PTFE/Red Silicone Septa, 9mm Blue Short Screw PP Cap, Colsed-top	100
SC9194	White PTFE/Red Silicone Septa, 9mm Black Short Screw PP Cap, Colsed-top	100
SC9196	White PTFE/Red Silicone Septa, 9mm Red Short Screw PP Cap, Colsed-top	100
SC9198	White PTFE/Red Silicone Septa, 9mm Yellow Short Screw PP Cap, Colsed-top	100
B-SC9291	Clear PTFE/White Silicone Septa, 9mm Blue PP Cap, 6mm Centre Hole, Bonded	100
B-SC92291	Pre-slit Clear PTFE/White Silicone Septa, 9mm Blue PP Cap, 6mm Centre Hole, Bonded	100

Micro-Inserts, Suits for 9mm Vials



Part No.	Description	Pk
IP250	250uL Micro-Insert with Mandrel Interior & Polymer Feet, 29*5.7mm, Suits for 9mm Vials	100
IP250-I	250uL Micro-Insert with Mandrel Interior & Polymer Feet, 29*5.7mm, Suits for 9mm Vials, Economy Package	100
IV250	250uL Conical Micro-Insert, 31*5.7mm, Suits for 9mm Vials	100
IV250-I	250uL Conical Micro-Insert, 31*5.7mm, Suits for 9mm Vials, Economy Package	100
I300	300uL Micro-Insert, 31*6mm, Clear, Flat Bottom, Suits for 9mm Vials	100

9mm Vials Package Style



10-425 Screw Neck Vials ND10, Wide Opening



VN1013



VN1023



VN1035



VN1045

Part No.	Description	Pk
VN1013	1.5mL Clear Screw Vial, 10-425 Thread, 11.6*32mm, 5.0 type	100
VN1023	1.5mL Clear Screw Vial w/Write-on Spot, 10-425 Thread, 11.6*32mm, 5.0 type	100
VN1035	1.5mL Amber Screw Vial, 10-425 Thread, 11.6*32mm, 5.0 type	100
VN1045	1.5mL Amber Screw Vial w/Write-on Spot, 10-425 Thread, 11.6*32mm, 5.0 type	100



10-425 Vials General Package



10-425 Vials & Closures Package NP3

10-425 Thread Caps with Septa



SNC102101



SNC101101

Part No.	Description	Pk
SN101	White PTFE/Red Silicone Septa Φ 10*1.5mm	100
SN102	Red PTFE/White Silicone Septa Φ 10*1.5mm	100
SNC101101	White PTFE/Red Silicone Septa, 10-425 Black Screw PP Cap, 7mm Centre Hole	100
SNC102101	Red PTFE/White Silicone Septa, 10-425 Black Screw PP Cap, 7mm Centre Hole	100

Micro-Inserts, Suits for 10-425



IP250



IV250



I300

Part No.	Description	Pk
IP250	250uL Micro-Insert with Mandrel Interior & Polymer Feet, 29*5.7mm, Suits for 10-425 Vials	100
IP250-I	250uL Micro-Insert with Mandrel Interior & Polymer Feet, 29*5.7mm, Suits for 10-425 Vials, Economy Package	100
IV250	250uL Conical Micro-Insert, 31*5.7mm, Suits for 10-425 Vials	100
IV250-I	250uL Conical Micro-Insert, 31*5.7mm, Suits for 10-425 Vials, Economy Package	100
I300	300uL Micro-Insert, 31*6mm, Clear, Flat Bottom, Suits for 10-425 Vials	100

11mm Snap Ring Vials ND11



V1013



V1023



V1035



V1045

Part No.	Description	Pk
V1017	1.5mL Clear Snap Ring Vial, 11.6*32mm, 7.0 type	100
V1027	1.5mL Clear Snap Ring Vial w/Write-on Spot, 11.6*32mm, 7.0 type	100
V1013	1.5mL Clear Snap Ring Vial, 11.6*32mm, 5.0 type	100
V1023	1.5mL Clear Snap Ring Vial w/Write-on Spot, 11.6*32mm, 5.0 type	100
V1035	1.5mL Amber Snap Ring Vial, 11.6*32mm, 5.0 type	100
V1045	1.5mL Amber Snap Ring Vial w/Write-on Spot, 11.6*32mm, 5.0 type	100



11mm Snap Ring Vials & Closures Package



11mm Snap Caps with Septa Package

11mm Snap-top Cap with Septa



Part No.	Description		Pk
S101	White PTFE/Red Silicone Septa	Φ11*1mm	100
S102	Red PTFE/White Silicone Septa	Φ11*1mm	100
S103	Red PTFE/White Silicone/Red PTFE Septa	Φ11*1mm	100
S104	Blue PTFE/White Silicone Septa	Φ11*1mm	100
S1011	Pre-slit White PTFE/Red Silicone Septa	Φ11*1mm	100
S1022	Pre-slit Red PTFE/White Silicone Septa	Φ11*1mm	100
S1044	Pre-slit Blue PTFE/White Silicone Septa	Φ11*1mm	100
C101	11mm Natural Snap-top PE Cap, 6mm Centre hole	Φ11mm	100
C102	11mm Snap-top PE Cap, 6mm Centre hole	Φ11mm	100
C103	11mm Snap-top PE Cap, 6mm Centre hole	Φ11mm	100
SC101101	White PTFE/Red Silicone Septa, 11mm Natural Snap-top PP Cap, 6mm Centre Hole		100
SC102101	Red PTFE/White Silicone Septa, 11mm Natural Snap-top PP Cap, 6mm Centre Hole		100
SC103101	Red PTFE/White Silicone/Red PTFE Septa, 11mm Natural Snap-top PE Cap, 6mm Centre Hole		100
SC104101	Blue PTFE/White Silicone Septa, 11mm Natural Snap-top PE Cap, 6mm Centre Hole		100
SC1011101	Pre-slit White PTFE/Red Silicone Septa, 11mm Natural Snap-top PE Cap, 6mm Centre Hole		100

Micro-Inserts Vials, Suits for Vials ND11



IP250



IV250



I300

Part No.	Description	Pk
IP250	250uL Micro-Insert with Mandrel Interior & Polymer Feet, 29*5.7mm, Suits for 11mm Snap Vials	100
IP250-I	250uL Micro-Insert with Mandrel Interior & Polymer Feet, 29*5.7mm, Suits for 11mm Snap Vials, Economy Package	100
IV250	250uL Conical Micro-Insert, 31*5.7mm, Suits for 11mm Snap Vials	100
IV250-I	250uL Conical Micro-Insert, 31*5.7mm, Suits for 11mm Snap Vials, Economy Package	100
I300	300uL Micro-Insert, 31*6mm, Clear, Flat Bottom, Suits for 11mm Snap Vials	100



IP250 Package



IP250-I Economy Package

11mm Crimp Vials ND11



V1113



V1123



V1135



V1145

Part No.	Description	Pk
V1117	1.5mL Clear Crimp Neck Vial, 11.6*32mm, 7.0 type	100
V1127	1.5mL Clear Crimp Neck Vial w/Write-on Spot, 11.6*32mm, 7.0 type	100
V1137	1.5mL Amber Crimp Neck Vial, 11.6*32mm, 7.0 type	100
V1147	1.5mL Amber Crimp Neck Vial w/Write-on Spot, 11.6*32mm, 7.0 type	100
V1113	1.5mL Clear Crimp Neck Vial, 11.6*32mm, 5.0 type	100
V1123	1.5mL Clear Crimp Neck Vial w/Write-on Spot, 11.6*32mm, 5.0 type	100
V1135	1.5mL Amber Crimp Neck Vial, 11.6*32mm, 5.0 type	100
V1145	1.5mL Amber Crimp Neck Vial w/Write-on Spot, 11.6*32mm, 5.0 type	100

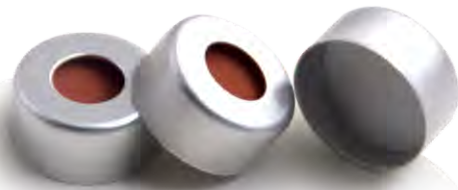


11mm Crimp Vials&Closures
2in 1 KITs



11mm Crimp Vials&Closures Package
Vials Package type: NP3

11mm Crimp-top Caps with Septa



SC111111



SC112111



SC113111

Part No.	Description		Pk
S111	White PTFE/Red Silicone Septa	Φ11*1mm	100
S112	Red PTFE/White Silicone Septa	Φ11*1mm	100
S113	Red PTFE/White Silicone/Red PTFE Septa	Φ11*1mm	100
S1111	Pre-slit White PTFE/Red Silicone Septa	Φ11*1mm	100
S1122	Pre-slit Red PTFE/White Silicone Septa	Φ11*1mm	100
C111	11mm Crimp-top Aluminum Cap, 5.5mm Centre Hole		100
SC111111	White PTFE/Red Silicone Septa, 11mm Crimp-top Aluminum Cap, 5.5mm Centre Hole		100
SC112111	Red PTFE/White Silicone Septa, 11mm Crimp-top Aluminum cap, 5.5mm Centre Hole		100
SC113111	Red PTFE/White Silicone/Red PTFE Septa, 11mm Crimp-top Aluminum Cap, 5.5mm Centre Hole		100
SC1111111	Pre-slit White PTFE/Red Silicone Septa, 11mm Crimp-top Aluminum Cap, 5.5mm Centre Hole		100
SC1122111	Pre-slit Red PTFE/White Silicone Septa, 11mm Crimp-top Aluminum Cap, 5.5mm Centre Hole		100



11mm Crimp Caps Package

Micro-Inserts, Suits for Vials ND11



I300



IP250



IV250

Part No.	Description	Pk
IP250	250uL Micro-Insert with Mandrel Interior & Polymer Feet, 29*5.7mm, Suits for 11mm Crimp Vials	100
IP250-I	250uL Micro-Insert with Mandrel Interior & Polymer Feet, 29*5.7mm, Suits for 11mm Crimp Vials, Economy Package	100
IV250	250uL Conical Micro-Insert, 31*5.7mm, Suits for 11mm Crimp Vials	100
IV250-I	250uL Conical Micro-Insert, 31*5.7mm, Suits for 11mm Crimp Vials, Economy Package	100
I300	300uL Micro-Insert, 31*6mm, Clear, Flat Bottom, Suits for 11mm Crimp Vials	100



IP250 Package

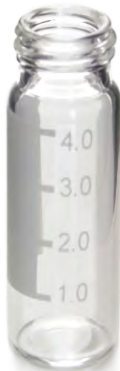


IP250-I
Economy Package

13-425 Screw Neck Vials ND13



V1317



V1327



V1335



V1345

Part No.	Description	Pk
V1317	4mL Clear 13-425 Screw Vial, 15*45mm, 7.0 type	100
V1327	4mL Clear 13-425 Screw Vial, w/Write-on Spot, 15*45mm, 7.0 type	100
V1335	4mL Amber 13-425 Screw Vial, 15*45mm, 5.0 type	100
V1345	4mL Amber 13-425 Screw Vial w/Write-on Spot, 15*45mm, 5.0 type	100



13-425 Vials&Closures Package



13-425 Vials&Closures Package

13-425 Thread Caps with Septa



SC131131



SC133131



SC132131



SC134132

Part No.	Description		Pk
S131	White PTFE/Red Silicone Septa	Φ13*1.5mm	100
S132	Red PTFE/White Silicone Septa	Φ13*1.5mm	100
S133	Red PTFE/White Silicone/Red PTFE Septa	Φ13*1.5mm	100
S134	Nature PTFE/Nature Silicone Septa	Φ13*1.5mm	100
C131	13mm Black Screw PP Cap, 8.5mm Centre Hole	Φ13mm	100
C132	13mm Black Screw PP Cap, Closed-top	Φ13mm	100
SC131131	White PTFE/Red Silicone Septa, 13mm Black Screw PP Cap, 8.5mm Centre Hole		100
SC132131	Red PTFE/White Silicone Septa, 13mm Black Screw PP Cap, 8.5mm Centre Hole		100
SC133131	Red PTFE/White Silicone/Red PTFE Septa, 13mm Black Screw PP Cap, 8.5mm Centre Hole		100
SC134131	Nature PTFE/Nature Silicone Septa, 13mm Black Screw PP Cap, 8.5mm Centre Hole		100
SC134132	Nature PTFE/Nature Silicone Septa, 13mm Black Screw PP Cap, Colsed-top		100
SC1311131	Pre-slit White PTFE/Red Silicone Septa, 13mm Black Screw PP Cap, 8.5mm Centre Hole		100

HeadSpace Vials

6-20mL Vials



Two types:

18mm Screw
10-20mL HS Vials

20mm Crimp
6-20mL HS Vials



18mm Screw Thread Headspace Vials



VA101



VA201



VA1035



VA2035

Part No.	Description	Pk
VA101	10mL Clear Precision Screw Headspace Vial, Round Bottom, 22.5*46mm, 5.0 type	100
VA201	20mL Clear Precision Screw Headspace Vial, Round Bottom, 22.5*75mm, 5.0 type	100
VA1035	10mL Amber Precision Screw Headspace Vial, Round Bottom 22.5*46mm, 5.0 type	100
VA2035	20mL Amber Precision Screw Headspace Vial, Round Bottom 22.5*75mm, 5.0 type	100
VA2023	20mL Clear Precision Screw Headspace Vial, w/Write-on Spot, Round Bottom, 22.5*75mm, 5.0 type	100

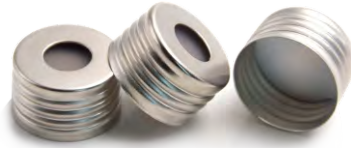


20mL Amber Precision Screw Headspace Vial&Closures Package

18mm Screw Thread Headspace Caps with Septa



SACA002-II



SACA003-II



SACA004

Part No.	Description	Pk
SA001	Blue PTFE/White Silicone Septa $\Phi 17.5 \times 1.5\text{mm}$	100
SA002-II	Red PTFE/White Silicone Septa $\Phi 17.5 \times 1.3\text{mm}$	100
SA003-II	White PTFE/Blue Transparent Silicone Septa $\Phi 17.5 \times 1.3\text{mm}$ For SPME	100
SA004	Gray PTFE/Red Butyl Septa $\Phi 17.5 \times 1.6\text{mm}$	100
CA001	18mm Magnetic Precision Screw Metal Cap, 8mm Centre Hole	100
SACA001	Blue PTFE/White Silicone Septa, 18mm Magnetic Precision Screw Metal Cap, 8mm Centre Hole	100
SACA002-II	Red PTFE/White Silicone Septa, 18mm Magnetic Precision Screw Metal Cap, 8mm Centre Hole	100
SACA003-II	White PTFE/Blue Transparent Silicone Septa, 18mm Magnetic Precision Screw Metal Cap, 8mm Centre Hole For SPME	100
SACA004	Gray PTFE/Red Butyl Septa, 18mm Magnetic Precision Screw Metal Cap, 8mm Centre Hole	100



SACA001



SACA001 Package

20mm Aluminum Crimp Caps for Headspace Crimp Vials



VH0613

VH1017
VH1013

VHR1017

VH2017
VH2013VHR2017
VHR2013

Part No.	Description	Pk
VH0613	6mL Clear Crimp-top Headspace Vial, Flat Bottom, 22*38mm(6mL Karl Fisher Vials), 5.0 type	100
VH1017	10mL Clear Crimp-top Headspace Vial, Flat Bottom, 22.5*46mm, 7.0 type	100
VHR1017	10mL Clear Crimp-top Headspace Vial, Round Bottom, 22.5*46mm, 7.0 type	100
VH1013	10mL Clear Crimp-top Headspace Vial, Flat Bottom, 22.5*46mm, 5.0 type	100
VH1035	10mL Amber Crimp-top Headspace Vial, Flat Bottom, 22.5*46mm, 5.0 type	100
VH2017	20mL Clear Crimp-top Headspace Vial, Flat Bottom, 22.5*75mm, 7.0 type	100
VHR2017	20mL Clear Crimp-top Headspace Vial, Round Bottom, 22.8*75mm, 7.0 type	100
VHR2017-I	20mL Clear Crimp-top Headspace Vial, Round Bottom, 22.5*75mm, 7.0 type	100
VH2013	20mL Clear Crimp-top Headspace Vial, Flat Bottom, 22.5*75mm, 5.0 type	100
VHR2013	20mL Clear Crimp-top Headspace Vial, Round Bottom, 22.8*75mm, 5.0 type	100
VH2035	20mL Amber Crimp-top Headspace Vial, Flat Bottom, 22.5*75mm, 5.0 type	100
VHR2035	20mL Amber Crimp-top Headspace Vial, Round Bottom, 22.8*75mm, 5.0 type	100
VH2023	20mL Clear Crimp-top Headspace Vial, w/Write-on Spot, Flat Bottom, 22.5*75mm, 5.0 type	100
VHR2023	20mL Clear Crimp-top Headspace Vial, w/Write-on Spot, Round Bottom, 22.8*75mm, 5.0 type	100

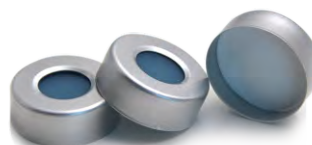
20mm Crimp-top Aluminum Caps with Septa



MS206



SC201201



SC209204



SBC201202



MS207



SCS201201



20mm Caps New Package

Part No.	Description	Pk
S201	White PTFE/White Silicone Septa Φ20*3mm	100
S202	Nature PTFE/Nature Silicone Septa Φ20*3mm	100
S203	White PTFE/Blue Silicone Septa Φ20*3mm	100
S204	Nature PTFE/Yellow Silicone Septa Φ20*3mm	100
S205	Nature PTFE/Blue Silicone Septa Φ20*3mm	100
MS206	Grey PTFE/Moulded Butyl Septa Φ20*3mm	100
MS207	Grey PTFE/Pharma-Fix Butyl Septa Φ20*3mm	100
C201	20mm Crimp-top Aluminum cap, 9.5mm Centre Hole	100
BC202	20mm Crimp-top Blue Magnetic Aluminum cap, 8mm Centre Hole	100
SC201201	White PTFE/White Silicone Septa, 20mm Crimp-top Aluminum Cap, 9.5mm Centre Hole	100
SCS201201	White PTFE/White Silicone Septa, 20mm Pressure Release Headspace Aluminum Cap, 9.5mm Centre Hole	100
SC209204	White PTFE/Blue Transparent Silicone Septa, 20mm Crimp-top Aluminum Cap, 10mm Centre Hole For 6mL Karl Fisher Vials	100
SBC201202	White PTFE/White Silicone Septa, 20mm Crimp-top Blue Magnetic Aluminum Cap, 8mm Centre Hole	100

Different color septa, different color caps, more types please consult in detail.

Sample Storage Vials

8-60mL Vials



Environmental analysis

15-425 Screw
8-12mL Vials

24-400 Screw
20-60mL Vials

TOC analysis
Purge and Trap System

24-400 Screw
40mL TOC Vials



V4015



V4025



V4035



V4045

15-425 Screw Neck Vials, PP Caps and Septa, Sample Storage Vials



V0817



V1217



V0837



V1237

Part No.	Description		Pk
V0817	8mL Clear Screw Vial, 15-425 Thread	16.6*60mm, 7.0 type	100
V1217	12mL Clear Screw Vial, 15-425 Thread	18.5*65mm, 7.0 type	100
V0837	8mL Amber Screw Vial, 15-425 Thread	16.6*60mm, 7.0 type	100
V1237	12mL Amber Screw Vial, 15-425 Thread	18.5*65mm, 7.0 type	100



8mL Clear 15-425 Screw Vials Package

15-425 Thread Caps with Septa



SC151151



SC154152

Part No.	Description	Pk
S151	White PTFE/Red Silicone Septa $\Phi 13.5 \times 1.5\text{mm}$	100
S152	Red PTFE/White Silicone Septa $\Phi 13.5 \times 1.5\text{mm}$	100
S154	Nature PTFE/Nature Silicone Septa $\Phi 13 \times 1.5\text{mm}$	100
C151	15-425 Black Screw PP Cap, 9mm Centre Hole	100
C152	15-425 Black Screw PP Cap, Closed-Top	100
SC151151	White PTFE/Red Silicone Septa 13.5*1.5mm, 15-425 Black Screw PP Cap, 9mm Centre Hole	100
SC152151	Red PTFE/White Silicone Septa 13.5*1.5mm, 15-425 Black Screw PP Cap, 9mm Centre Hole	100
SC154152	Nature PTFE/Nature Silicone Septa 13.5*1.5mm, 15-425 Black Screw PP Cap, Closed-Top	100



15-425 Caps with Septa Package

24-400 Screw Neck Vials, PP Caps and Septa, EPA Vials Sample Storage Vials

These large volume vials are ideal for sample storage and general laboratory use.



V2027
V2035



V3017
V3015

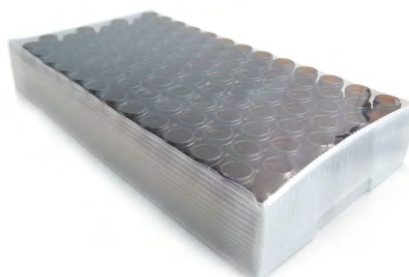


V4027
V4035



V6017
V6015

Part No.	Description	Pk
V2017 V2015	20mL Clear EPA Screw Vial, 24-400 Thread, 27.5*57mm, 20mL Clear EPA Screw Vial, 24-400 Thread, 27.5*57mm,	7.0 type 5.0 type 100
V2027 V2035	20mL Amber EPA Screw Vial, 24-400 Thread, 27.5*57mm, 20mL Amber EPA Screw Vial, 24-400 Thread, 27.5*57mm,	7.0 type 5.0 type 100
V3017 V3015	30mL Clear EPA Screw Vial, 24-400 Thread, 27.5*75mm, 30mL Clear EPA Screw Vial, 24-400 Thread, 27.5*75mm,	7.0 type 5.0 type 100
V3027 V3035	30mL Amber EPA Screw Vial, 24-400 Thread, 27.5*75mm, 30mL Amber EPA Screw Vial, 24-400 Thread, 27.5*75mm,	7.0 type 5.0 type 100
V4017 V4015	40mL Clear EPA Screw Vial, 24-400 Thread, 27.5*95mm, 40mL Clear EPA Screw Vial, 24-400 Thread, 27.5*95mm,	7.0 type 5.0 type 100
V4027 V4035	40mL Amber EPA Screw Vial, 24-400 Thread, 27.5*95mm, 40mL Amber EPA Screw Vial, 24-400 Thread, 27.5*95mm,	7.0 type 5.0 type 100
V6017 V6015	60mL Clear EPA Screw Vial, 24-400 Thread, 27.5*140mm, 60mL Clear EPA Screw Vial, 24-400 Thread, 27.5*140mm,	7.0 type 5.0 type 100
V6027 V6035	60mL Amber EPA Screw Vial, 24-400 Thread, 27.5*140mm, 60mL Amber EPA Screw Vial, 24-400 Thread, 27.5*140mm,	7.0 type 5.0 type 100



24-400 Screw Neck PP Caps with Septa



SC221221



SC221223



SC221225

Part No.	Description	Pk
S221-I	Nature PTFE/Nature Silicone septa 22*3mm	100
S223	Nature PTFE/Nature Silicone/Nature PTFE septa 22*3mm	100
C221	White Screw PP Cap, 15mm Centre Hole Φ 24mm	100
C222	White Screw PP Cap, Closed-top Φ 24mm	100
C223	Black Screw PP Cap, 15mm Centre Hole Φ 24mm	100
C224	Black Screw PP Cap, Closed-top Φ 24mm	100
C225	Red Screw PP Cap, 15mm Centre Hole Φ 24mm	100
SC221221	Nature PTFE/Nature Silicone Septa 22*3mm, 24mm White Screw PP Cap, 15mm Centre Hole	100
SC221222	Nature PTFE/Nature Silicone Septa 22*3mm, 24mm White Screw PP Cap, Closed-top	100
SC221223	Nature PTFE/Nature Silicone Septa 22*3mm, 24mm Black Screw PP Cap, 15mm Centre Hole	100
SC221224	Nature PTFE/Nature Silicone Septa 22*3mm, 24mm Black Screw PP Cap, Closed-top	100
SC221225	Nature PTFE/Nature Silicone Septa 22*3mm, 24mm Red Screw PP Cap, 15mm Centre Hole	100



24-400 Screw Neck Vials, PP Caps and Septa, 40mL TOC Vials Purge and Trap Vials 5.0 type

Pre-cleaning are not available , vials could be used in TOC analysis after cleaning.
 Compatible brands: Agilent, Dionex, Shimadzu, Tekmar, Thermo Scientific, Varian.



V4015



V4025

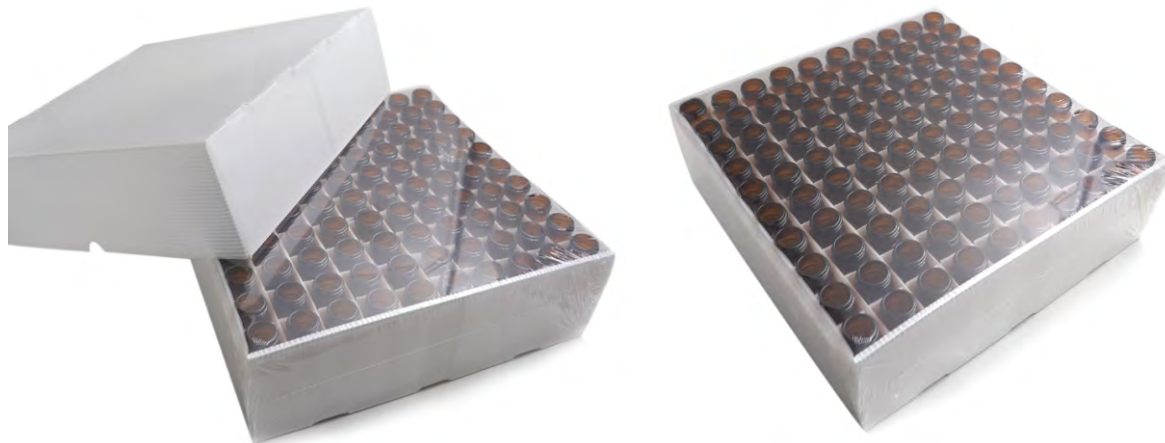


V4035



V4045

Part No.	Description	Pk
V4015	40mL 24-400 Clear Screw Neck Vial, 27.5*95mm 5.0 type, Use for TOC&Purge and Trap System	100
V4025	40mL 24-400 Clear Screw Neck Vial, w/Write-on Spot, 27.5*95mm 5.0 type, Use for TOC&Purge and Trap System	100
V4035	40mL 24-400 Amber Screw Neck Vial, 27.5*95mm 5.0 type, Use for TOC&Purge and Trap System	100
V4045	40mL 24-400 Amber Screw Neck Vial, , w/Write-on Spot, 27.5*95mm 5.0 type, Use for TOC&Purge and Trap System	100



TOC&Purge and Trap Vials Package

24-400 PP Caps and Septa Use for Purge and Trap System TOC PP Caps and Septa, Low bleeding

Compatible brands: Agilent, Dionex, Shimadzu, Tekmar, Thermo Scientific, Varian.



SC228221



B-SC228221



SC223222



SC228225

Part No.	Description	Pk
S228	Nature PTFE/Nature Silicone Septa 22*3mm, Low bleeding	100
TOC	PE Dust Cover, used for 24-400 Caps	100
C221	White Screw PP Cap, 15mm Centre Hole Φ24mm	100
C222	White Screw PP Cap, Closed-top Φ24mm	100
C225	Red Screw PP Cap, 15mm Centre Hole Φ24mm	100
SC228221	24-400 PP Screw Cap White, Centre Hole, Nature PTFE/Nature Silicone, Low bleeding	100
B-SC228221	24-400 PP Screw Cap White, Centre Hole, Nature PTFE/Nature Silicone, Low bleeding, Bonded Screw Caps	100
SC223222	24-400 PP Screw Cap White, Closed-top, Nature PTFE/Nature Silicone/Nature PTFE, Low bleeding	100
SC228225	24-400 PP Screw Cap Red, Centre Hole, Nature PTFE/Nature Silicone, Low bleeding	100



24-400 Caps with Septa Package

2-60mL Closed Caps&Open Caps



SC8182



SC9192



SC134132



SC154152



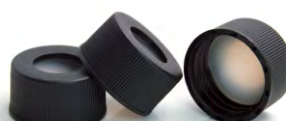
SC151151



SC221221



SC221222



SC221223



SC221224

Part No.	Description	Pk
SC8181	White PTFE/Red Silicone Septa, 8-425 Black Cap, Open-top Adaptive Volume : 1.5mL	100
SC8182	White PTFE/Red Silicone Septa, 8-425 Black Cap, Closed-top Adaptive Volume : 1.5mL	100
SC9191	White PTFE/Red Silicone Septa, 9mm Blue Cap, Open-top Adaptive Volume : 1.5mL	100
SC9192	White PTFE/Red Silicone Septa, 9mm Blue Cap, Closed-top Adaptive Volume : 1.5mL	100
SC131131	White PTFE/Red Silicone Septa, 13-425 Black Cap, Open-top Adaptive Volume : 4mL	100
SC134132	Nature PTFE/Nature Silicone Septa, 13-425 Black Cap, Closed-top Adaptive Volume : 4mL	100
SC151151	White PTFE/Red Silicone Septa, 15-425 Black Cas, Open-top Adaptive Volume : 8-12mL	100
SC154152	Nature PTFE/Nature Silicone Septa, 15-425 Black Cap, Closed-top Adaptive Volume : 8-12mL	100
SC221221	Nature PTFE/Nature Silicone Septa, 24-400 White Cap, Open-top Adaptive Volume : 20-60mL	100
SC221222	Nature PTFE/Nature Silicone Septa, 24-400 White Cap, Closed-top Adaptive Volume : 20-60mL	100
SC221223	Nature PTFE/Nature Silicone Septa, 24-400 Black Cap, Open-top Adaptive Volume : 20-60mL	100
SC221224	Nature PTFE/Nature Silicone Septa, 24-400 Black Cap, Closed-top Adaptive Volume : 20-60mL	100

Vials Rack



RV001&RV002 Vials Rack

Part No.	Description	Pk
RV001	Vials Rack for 1.5mL Vials, Blue, 50 Holes	1
RV002	Vials Rack for 4mL Vials, Blue, 50 Holes	1

Hand Crimper



AJRC20



AJRC11-II



AJRC20-II



AJRC20-W

Part No.	Description	Pk
AJRC20	Hand Crimper, for 20mm Crimp Caps Seals	1
AJRC11-II	Hand Crimper, for 11mm Crimp Caps Seals, 2016 NEW type	1
AJRC20-II	Hand Crimper, for 20mm Crimp Caps Seals, 2016 NEW type	1
AJRC11-W	Hand Crimper, for 11mm Crimp Caps Seals, Economy type	1
AJRC20-W	Hand Crimper, for 20mm Crimp Caps Seals, Economy type	1
AJRD11-W	Hand Decrimper, for 11mm Crimp Caps Open, Economy type	1
AJRD20-W	Hand Decrimper, for 20mm Crimp Caps Open, Economy type	1

16mm Test tubes for Water Analysis



Flat test tubes



Round test tubes

Part No.	Description	Pk
COD-SC	White Screw PC Cap with PTFE Septa for 16mm test tube Closures, HC type	100
COD-SC-I	White Screw PC Cap with PTFE Septa for 16mm test tube Closures, LVB type	100
COD-V50	10mL Clear test tube for Water Analysis, Round Bottom, 16x100mm, HC type	100
COD-VF50	10mL Clear test tube for Water Analysis, Flat Bottom, 16x100mm, HC type	100
COD-VF50-90	9mL Clear test tube for Water Analysis, Flat Bottom, 16x90mm, LVB type	100
COD-V50-125	12mL Clear test tube for Water Analysis, Round Bottom, 16x125mm, HC type	100
COD-V50-150	15mL Clear test tube for Water Analysis, Round Bottom, 16x150mm, HC type	100



25 Package



100 Package

25mm FTU Test Vials Sample Cell w/cap Pk/6



FTU-VF50-60



FTU-VF50-60

Part No.	Description	Pk
FTU-VF50-60	20mL Water Sample Cell with Cap, Clear, 25x60mm Flat Bottom	6
FTU-VF50-95	30mL Water Sample Cell with Cap, Clear, 25x95mm Flat Bottom	6

13&16mm Culture Tubes



Part No.	Description	Pk
CT-F13-SC	PTFE Septa for 13mm Culture Tube Closures, Black Screw Cap, Closed-top	100
CT-F16-SC	PTFE Septa for 16mm Culture Tube Closures, Black Screw Cap, Closed-top	100
CT-F13-V50	8mL Screw Tube, Culture, 13X100MM, W/Patch	100
CT-F16-V51	10mL Screw Tube, Culture, 16X100MM, Without Writing Patch	100
CT-F16-V51-125	12mL Screw Tube, Culture, 16X125MM, Without Writing Patch	100
CT-F16-V51-150	15mL Screw Tube, Culture, 16X150MM, Without Writing Patch	100

GC Septa



GCS01



GCS02

Part No.	Description	Pk
GCS01	GC Plug for Shimadzu GCs, Thermolite Color, $\Phi 5.5 \times 7 \times 7.5$ mm, Temperature Resistant 340°C	25
GCS02	GC Septa, Green Color, $\Phi 11 \times 3$ mm, Temperature Resistant 250°C	25

Septa Customization



Fluororubber/PTFE



EPDM/PTFE



Natural Rubber/PTFE



Butyl Rubber/PTFE

HPLC Syringe Filter



13&25mm Syringe Filter

Part No.	Description	Pk
FN1322 FN1345	13mm 0.22μm Nylon Syringe Filter, Green 13mm 0.45μm Nylon Syringe Filter, Green	100
FN2522 FN2545	25mm 0.22μm Nylon Syringe Filter, Green 25mm 0.45μm Nylon Syringe Filter, Green	100
FF1322 FF1345	13mm 0.22μm Hydrophilic PVDF Syringe Filter, Blue 13mm 0.45μm Hydrophilic PVDF Syringe Filter, Blue	100
FF2522 FF2545	25mm 0.22μm Hydrophilic PVDF Syringe Filter, Blue 25mm 0.45μm Hydrophilic PVDF Syringe Filter, Blue	100
FE1322I FE1345I	13mm 0.22μm Hydrophilic PTFE Syringe Filter, Red 13mm 0.45μm Hydrophilic PTFE Syringe Filter, Red	100
FE2522I FE2545I	25mm 0.22μm Hydrophilic PTFE Syringe Filter, Red 25mm 0.45μm Hydrophilic PTFE Syringe Filter, Red	100
FE1322 FE1345	13mm 0.22μm Hydrophobic PTFE Syringe Filter, Red 13mm 0.45μm Hydrophobic PTFE Syringe Filter, Red	100
FE2522 FE2545	25mm 0.22μm Hydrophobic PTFE Syringe Filter, Red 25mm 0.45μm Hydrophobic PTFE Syringe Filter, Red	100
FS1322 FS1345	13mm 0.22μm PES Syringe Filter, Yellow 13mm 0.45μm PES Syringe Filter, Yellow	100
FS2522 FS2545	25mm 0.22μm PES Syringe Filter, Yellow 25mm 0.45μm PES Syringe Filter, Yellow	100
FM1322 FM1345	13mm 0.22μm MCE Syringe Filter, Orange 13mm 0.45μm MCE Syringe Filter, Orange	100
FM2522 FM2545	25mm 0.22μm MCE Syringe Filter, Orange 25mm 0.45μm MCE Syringe Filter, Orange	100
FP1322 FP1345	13mm 0.22μm PP Syringe Filter, White 13mm 0.45μm PP Syringe Filter, White	100
FP2522 FP2545	25mm 0.22μm PP Syringe Filter, White 25mm 0.45μm PP Syringe Filter, White	100
FC1322 FC1345	13mm 0.22μm Cellulose Acetate Syringe Filter, Orange 13mm 0.45μm Cellulose Acetate Syringe Filter, Orange	100
FC2522 FC2545	25mm 0.22μm Cellulose Acetate Syringe Filter, Orange 25mm 0.45μm Cellulose Acetate Syringe Filter, Orange	100

8-425 Screw



Size(mm)	11.6X32	11.6X32	11.6X32	11.6X32
Usable Volume(mL)	1.5	1.5	1.5	1.5
Part number	V817 V813	V827 V823	V837 V835	V847 V845

9mm Screw



Size(mm)	11.6X32	11.6X32	11.6X32	11.6X32	11.6X32
Usable Volume(mL)	1.5	1.5	1.5	1.5	0.25
Part number	V917 V913	V927 V923	V937 V935	V947 V945	VL913

10-425 Screw



Size(mm)	11.6X32	11.6X32	11.6X32	11.6X32
Usable Volume(mL)	1.5	1.5	1.5	1.5
Part Number	VN1013	VN1023	VN1035	VN1045

11mm Snap

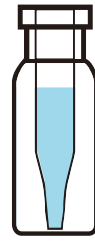


Size(mm)	11.6X32	11.6X32	11.6X32	11.6X32
Usable Volume(mL)	1.5	1.5	1.5	1.5
Part Number	V1017 V1013	V1027 V1023	V1035	V1045

11mm Crimp

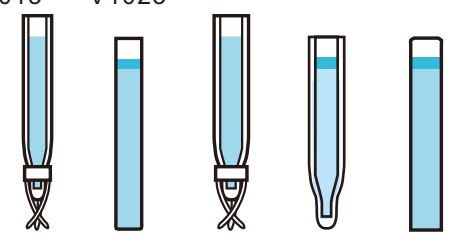


Size(mm)	11.6X32	11.6X32	11.6X32	11.6X32
Usable Volume(mL)	1.5	1.5	1.5	1.5
Part Number	V1117 V1113	V1127 V1123	V1137 V1135	V1147 V1145



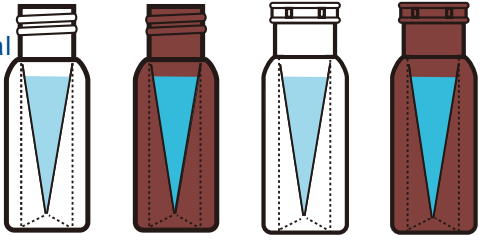
Size(mm)	11.6X32
Usable Volume(mL)	0.25
Part Number	VL1113

Inserts



Size(mm)	5X29	5X31	6X29	6X31	6X31
Usable Volume(mL)	0.17	0.25	0.25	0.3	0.4
Part Number	IP150	I250	IP250	IV250	I300
Residual Volume	<1µL	<12µL	<1µL	<4µL	<25µL

PP Micro-Vial



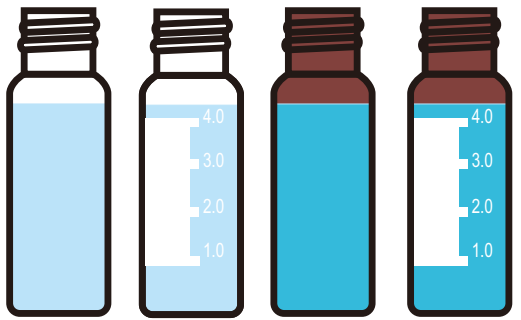
Size(mm)	11.6X32	11.6X32	11.6X32	11.6X32
Usable Volume(mL)	0.3	0.3	0.3	0.3
Part Number	VP91	VP93	VP101	VP103
Residual Volume	<1µL	<1µL	<1µL	<1µL

15-425 Screw



Size(mm)	16.6X60	16.6X60	18.5X65	18.5X65
Usable Volume(mL)	8	8	12	12
Part Number	V0817	V0837	V1217	V1237

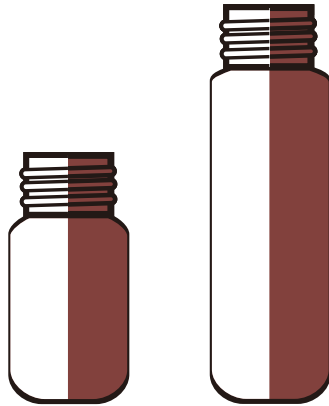
13-425 Screw



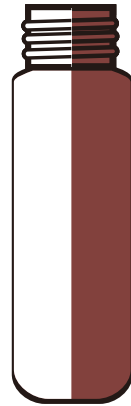
Size(mm)	14.5X45	14.5X45	14.5X45	14.5X45
Usable Volume(mL)	4	4	4	4
Part Number	V1317	V1327	V1335	V1345



18mm Screw Headspace Vials

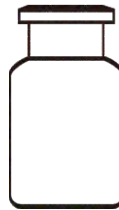


Size(mm) 22.5X46
 Approx. Total Capacity 10
 Usable Volume(mL) <8
 Part Number **VA101**
VA1035



22.5X75.5
 20
 <16
VA201
VA2035

20mm Crimp Headspace Vials



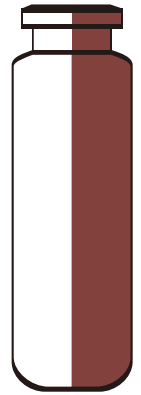
22X38
 6
 <8
VH0613



22.5X46
 10
 <8
VH1017
VH1013
VH1035

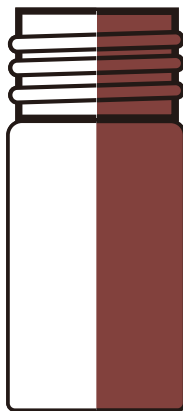


22.5X75.5
 20
 <16
VH2017
VH2013
VH2035

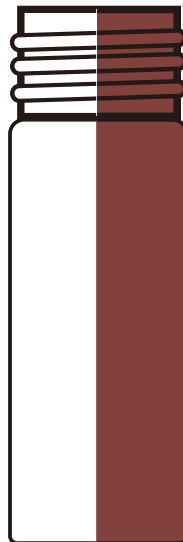


22.8X75.5
 20
 <16
VHR2013
VHR2035

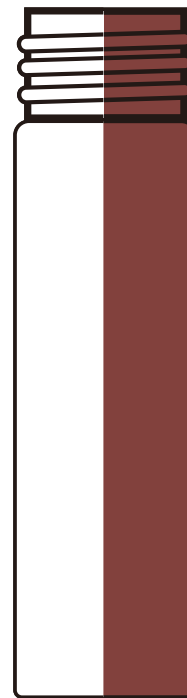
24-400 EPA Storage Vials



Size(mm) 27.5X57
 Approx. Total Capacity 20
 Usable Volume(mL) 18
 Part Number **V2017/V2015**
V2027/V2035



27.5X75
 30
 27
V3017/V3015
V3027/V3035



27.5X95
 40
 36
V4017/V4015
V4027/V4035



27.5X140
 60
 54
V6017/V6015
V6027/V6035

1.5mL Vials Package



1.5mL Package PP

New



1.5mL Package NP3

New



1.5mL Package NP2

New



1.5mL Package NP1



1.5mL Closures Package

New



Vials&Closures
2in 1 KITS



Flat Inserts
Package



Conical Inserts
Package



Conical Inserts
Economy Package

4-12mL Vials Package(13-425,15-425)



4mL Vials Package



13-425 Closures Package

20mm Crimp Headspace Vials Package



6mL HS Vials Package



10mL HS Vials Package



20mL HS Vials Package

★Remarks: General Package New Package

18mm Screw Headspace Vials Package



10mL HS Vials Package



20mL HS Vials Package

Headspace Caps with Septa Package



18mm Screw Closures Package



18mm Screw Closures Package

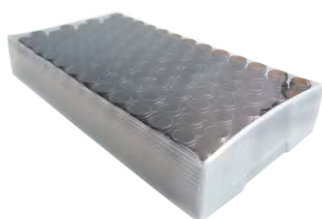


20mm Crimp Closures Package

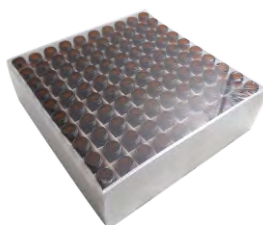


20mm Crimp Closures Package

24-400 Screw Vials Package



20-30-40-60mL Storage Vials Package



40mL TOC Vials Package



24-400 Closures Package

★Remarks: General Package New Package



ZHEJIANG AIJIREN TECHNOLOGY, INC.



Email: Ericwu@aijirenvial.com

Tel/Whatsapp/Wechat: +8618057059198

Web: www.aijirenvial.com

Part of Aijiren

©2022 Aijiren, Inc. All rights reserved.

